

# تدريبات قسم الاستماع



# Listening Test 1

## SECTION 1

Complete the notes below write **ONE WORD** only for each answer.

### NOTES OF CUSTOMER INFORMATION

information source : found in the brochure

Included services **1**..... and accommodation

Sydney arrival date: 15<sup>th</sup> of **2**.....

Accommodation criteria: **3** .....



صور الكود او  
اضغط على علامة الصوت



Complete the form below.

Write **NO MORE THAN THREE WORDS OR A NUMBER** for each answer.

BOOKING INFORMATION	
Room type:	<b>4</b> .....
Credit card holder:	<b>5</b> .....
Total cost for one night:	<b>6</b> .....

Complete the sentence below.

Write no more than **TWO words** for answer.

The **7**..... is within walking distance of the accommodation

The customer books **8** .....

Aboriginals stone carvings are in the **9** .....

The Dreamtime can be experienced beneath the **10**.....

# Listening Test 1

## SECTION 2

Complete the Notes Below

Write **NO MORE THAN 2 WORDS OR A NUMBER** for each answer

### Public Service broadcast

Volunteer workers must be at least **11**..... years old.

Job applicants should not have **12** .....

Job applicants are asked to submit 13 and **14**..... .

The employer will pay the expenses of **15**..... and phone calls.

Complete the table below

Write **NO MORE THAN TWO WORDS AND/OR A NUMBER** for each answer

People need help	Duties	Requirement for volunteers	Service Time
Wheelchair users	Drive clients to scenic locations	- Excellent health - must own a First Aid certificate from the <b>16</b> .....	<b>17</b> .....
The blind	Read books to blind people	- Read English clearly - No <b>18</b> ..... is an advantage	Monday mornings
<b>19</b> .....	Take care of them on holiday	- have knowledge of basic first aid - good health - can elevate to a maximum of <b>20</b> .....	1 week in August

# Listening Test 1

## SECTION 3

Complete the notes below

Write **NO MORE THAN TWO WORDS AND/OR A NUMBER** for each answer

### Environmental change Discussion

- Agricultural work is having an **21**..... effect on the environment.
- Too much farming operation has caused a serious problem, which is called **22**.....
- Many places now seem to look like desert rather than **23**.....
- One proof the article had pointed out to show that things can hardly grow in some areas is the **24**.....
- The relation between the number of farmers and the acreage of woodland is **25**.....
- One reason for plants cannot grow is that the earth contains too much **26**.....
- Researchers have carried out a test to show the **27**..... of the solution.
- The possible range of salinity to grow plants is **28**.....
- The **29**..... in Dr.Horst's books are useful and worth studying.
- The student needs a **30**..... to do his presentation

# Listening Test 1

## SECTION 4

Complete the sentences below.

Write **NO MORE THAN TWO WORDS** for each answer.

Bees that help with pollination benefit flowers and **31**.....

Bees produce wax that can be made into candles and **32** .....

Dragonflies primarily eat **33** .....

Insects in summer can be harmful because they can carry such deadly diseases as malaria, **34** ..... and sleeping sickness

Harmful insects may destroy crops, clothes, furniture, and even the **35** .....

Complete the notes below.

Write **NO MORE THAN TWO WORDS** for each answer.

### How to kill bad Insects

Chemical Method

These solutions to insect problems are often not worthwhile because:

a) They are effective on a **36**.....

b) They Can bring harm to **37**.....

c) Insects become **38**..... to the chemicals quickly.

Biological methods

These Methods are **39**..... than chemical methods of eliminating harmful insects.

Breeding control method

In order to control the breeding of insects, one needs to understand the insects' **40**.....

## Listening Test 1

1. flights
2. April
3. cheapest/budget
4. non-smoking
5. John A. Smyth/John A Smyth
6. 110 dollars/\$110
7. Cultural Centre/Cultural Center
8. camel ride
9. desert
10. stars
11. 18
12. police records
13. references
14. (recent) CV
15. transportation
16. Red Cross
17. Tuesday afternoons
18. foreign accent
19. Disabled Children
20. 75/seventy-five pounds/75 lb
21. adverse
22. deforestation
23. jungle
24. soil samples
25. inverse
26. saline
27. ionisation/ionization
28. narrow
29. photographs
30. map
31. fruit trees
32. polish/ furniture polish
33. mosquitoes/mosquitos
34. yellow fever
35. (whole) building
36. small scale
37. humans
38. resistant
39. cheaper
40. life cycle

# Listening Test 2

## SECTION 1

Complete the form below.

Write **NO MORE THAN TWO WORDS AND/OR A NUMBER** for each answer.

Product Incident Report



صور الكود أو  
اضغط على علامة الصوت



Example	Answer
Product:	rice cooker
Model Number:	1.....
Price of the Product:	£2.....
Name of the Branch:	3.....
Problem:	4.....

Complete the form below.

Write **NO MORE THAN THREE WORDS AND/OR A NUMBER** for each answer.

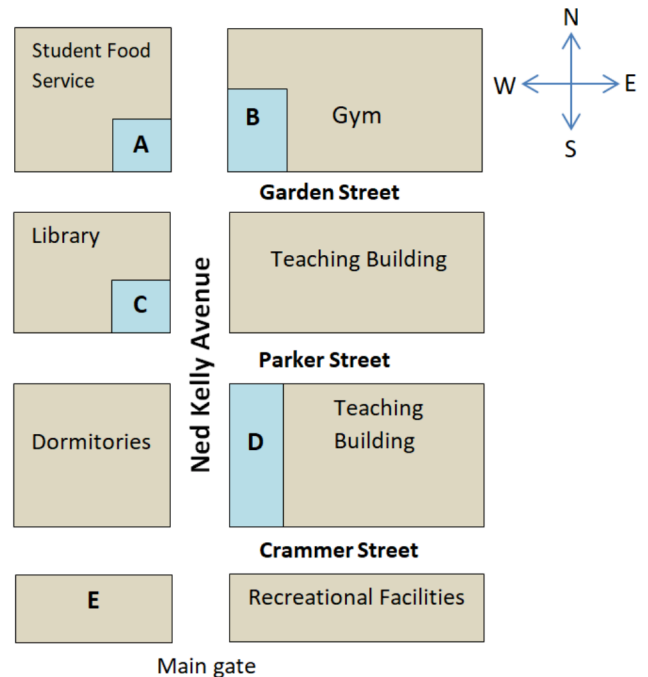
CUSTOMER'S INFORMATION DETAILS	
Name:	Herbert Hewitt
Address:	5.....
Postcode:	6.....
Method of payment:	7.....
Card's Expiry Date:	8.....
Method of Compensation:	9.....
Shopping Frequency:	10.....

## Listening Test 2

### SECTION 2

Listen to the directions and match the places in questions **11-15** to the appropriate place among **A-E** on the map.

- 11**..... Student Centre
- 12**..... Health Centre
- 13**..... Internet Unit
- 14**..... Complaint Office
- 15**..... Cafe



Complete the sentences below.

Write **NO MORE THAN TWO WORDS AND/OR A NUMBER** for each answer.

Students in a room don't need to share a **16**..... with ones in other rooms.

Everyone has to write down his name on the **17**.....

All the students use a **18**..... to enter the dorm's front door.

If you want to wash your clothes, go to the laundry room which is located in the **19**.....

The dormitory closes at **20**..... every night.



# Listening Test 2

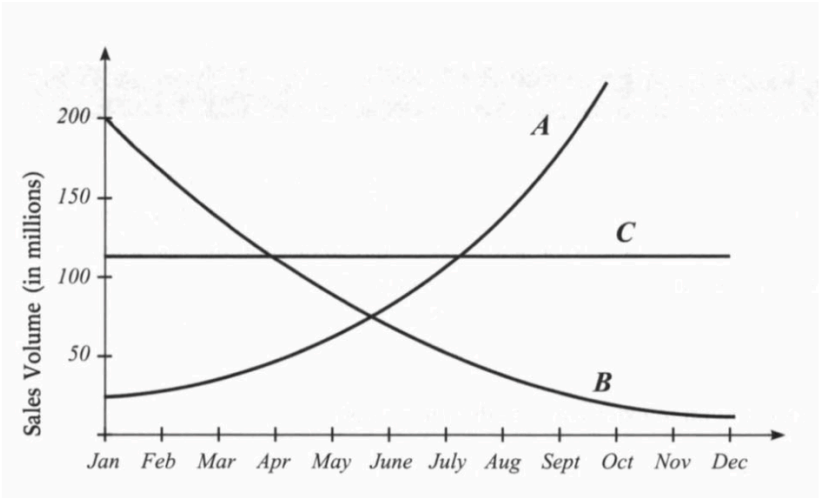
## SECTION 3

Choose the correct letters, **A-C**, and write each next to questions **21** and **22**.

According to Betty, which lines describe the sales of both **cheese** and **oil** in **New Zealand** and **Colombia**?

**21**.....

**22**.....



Write the correct letters, A-E, next to questions 23-24.

Which **TWO** of the following are sales strategies for chocolate in Italy and Germany?

- A.** Locate near a children's school
- B.** Change the location of the product on shelves
- C.** Give a free gift
- D.** Make it the cheapest brand
- E.** Make Schmutzig the second cheapest brand

Complete the table below.

Write **NO MORE THAN TWO WORDS** for each answer.

### Research plan

Betty is interested in how **25**..... affects the sales of cosmetics and 26 .....

Bruce is going to be concerned with how **27** ..... may impact on sales of cookies and the relationships among **28** ..... , **29** ..... , and sales. The professor advised the students to bear in mind the extensions of

**30** .....

# Listening Test 2

## SECTION 4

Complete the table below.

Write **NO MORE THAN TWO WORDS AND/OR A NUMBER** for each answer.

### Talking about the history of bikes

Years/Time	Feature	Advantage	Disadvantage
1830s	wooden wheels covered with metal	need <b>31</b> ..... than walking	quite <b>32</b> .....
<b>33</b> .....	Chain and sprocket are <b>34</b> .....	easier and <b>35</b> ..... ride	harder to balance
1880s	use <b>36</b> .....	more comfortable	The faster you go, the more you feel every bump.
1890s	equal-sized wheels	<b>37</b> .....	dangerous before brakes appeared

Choose **THREE** letters, A-F, and write them next to questions 38-40.

The invention of different gears on a bicycle affected which **THREE** of the following?

- A. Wheel size
- B. Balance
- C. Rate of speed
- D. The back wheel
- E. Safety
- F. Downhill travel

## Listening Test 2

### SECTION 4

1. R242
2. 89.99
3. City Center
4. steam escaping/escaping steam
5. 84 Park Rd/Road
6. B0241DJ
7. credit card
8. April 2008
9. refund
10. once a month
11. E
12. A
13. B
14. D
15. C
16. bathroom
17. food containers
18. code
19. basement
20. 11:30/11.30
21. B
22. C
23. 24 B,E
25. colour/color
26. cleaning products
27. (different) containers
28. materials
29. image
30. advertisement
31. less effort
32. uncomfortable
33. 1860s
34. connected
35. more smoothly
36. rubber wheels
37. safer
- 38, 40. C,D,F

# Listening Test 3

## SECTION 1 Questions 1- 5

Complete the notes.

Write **NO MORE THAN TWO WORDS AND/OR**

**NUMBERS** for each answer.



صور الكود او  
اضغط على علامة الصوت

Basic Details of Project	
Example: Pre-phase	involves selecting rooms & 1.....
Phase 1:	<ul style="list-style-type: none"><li>time needed: 3 days</li><li>staff involved: Jenna, Marco, &amp; 2 .....</li></ul>
Phase 2:	<ul style="list-style-type: none"><li>time needed: 3.....</li><li>staff involved: 4..... , with assistance from 5.....</li></ul>

### Questions 6-10

Listen from here Show Notepad  
Choose the correct letter, A, B, or C.

**6.** The main form of data collection will be

- A questionnaires.
- B Internet polling.
- C face-to-face interviews.

**7.** To finish in time, the staff will have to

- A work late.
- B come in early.
- C take some work home.

**8.** The final report will contain

- A three appendices.
- B material from the company website.
- C a supplementary booklet.

**9.** The final report will be handed in on the

- A 5th.
- B 15th.
- C 25th.

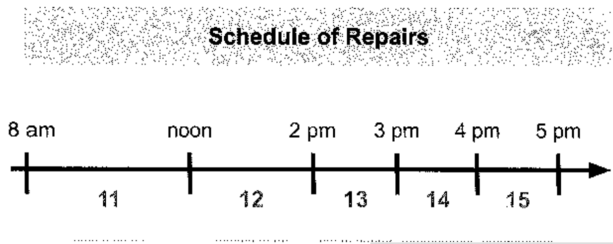
**10.** At the end, there will be

- A an office party.
- B a restaurant dinner.
- C presents for all involved.

# Listening Test 3

## SECTION 2

Complete the repair schedule.  
Write the correct letter, **A-F**, for each answer.



- 11.....
- 12.....
- 13.....
- 14.....
- 15.....

	Problems to Fix
A	Birds in ceiling
B	Broken windows
C	Electrical fault
D	Fallen tree
E	Leaking roof
F	Staining on walls

Complete the sentences.  
Write **NO MORE THAN TWO WORDS** for each answer.

### Additional Details Concerning Repairs

- The stained walls will be painted **16**.....
- Extra paint will be left in the **17**.....
- The baby birds will be given to a **18** .....
- The fallen tree will be used as **19**.....
- The smaller parts of the tree will be put in a **20** .....

# Listening Test 3

## SECTION 3

Complete the table.

Write **NO MORE THAN TWO WORDS** for each answer.

Subject	Textbook Used	Criticism of this book
Social History	<b>21</b> .....	It is <b>22</b> .....
Cultural Studies	<b>23</b> .....	It <b>24</b> .....
<b>25</b> .....	Government in Action	It is <b>26</b> .....

Choose the correct letter, **S**, **C**, or **P**.  
**NB** You may use **a letter more than once**.

What are the speakers' favourite subjects?

- 27**..... Steve
- 28**..... David
- 29**..... Susan
- 30**..... Olive

<b>S</b>	Social History
<b>C</b>	Cultural Studies
<b>P</b>	Political Theory

## Listening Test 3

### SECTION 4 Questions 31 - 32

Choose the correct letter, A, B, or C.

**31.** Originally, country towns

**A** required fewer workers.

**B** had lots of animals.

**C** were more interesting places.

**32.** Now, the problems there

**A** can be solved.

**B** are numerous.

**C** are expected.

### Questions 33-35

Choose **THREE** answers from the list and write the correct letter, A-F, next to the questions.

Which **THREE** factors are typical of modern farming?

**A** Many overheads

**B** More machines

**C** Fewer types of products

**D** More frequent feeding

**E** Greater numbers of products

**F** More factories

### Questions 36-40

Complete the table.

Write **NO MORE THAN TWO WORDS** for each answer.

Possible Solution	Important Factor	Examples
tourism	Locals must <b>36</b> .....	Daylesford area uses its <b>37</b> .....
using the <b>38</b> .....	- is <b>39</b> ..... by its distinctive product - must market the idea effectively	Shepparton is known for its <b>40</b> .....

## Listening Test 3

- |                              |  |
|------------------------------|--|
| <b>1.</b> equipment (needed) | <b>20.</b> garden bin                  |
| <b>2.</b> Fred               | <b>21.</b> Welfare State               |
| <b>3.</b> 6/six days         | <b>22.</b> too long                    |
| <b>4.</b> Mike               | <b>23.</b> In Perspective              |
| <b>5.</b> Leo                | <b>24.</b> oversimplifies              |
| <b>6.</b> C                  | <b>25.</b> Political Theory            |
| <b>7.</b> A                  | <b>26.</b> not relevant                |
| <b>8.</b> C                  | <b>27.</b> C                           |
| <b>9.</b> B                  | <b>28.</b> S                           |
| <b>10.</b> C                 | <b>29.</b> P                           |
| <b>11.</b> E                 | <b>30.</b> P                           |
| <b>12.</b> A                 | <b>31.</b> C                           |
| <b>13.</b> D                 | <b>32.</b> C                           |
| <b>14.</b> F                 | <b>33 35.</b> B,C,E                    |
| <b>15.</b> C                 | <b>36.</b> participate                 |
| <b>16.</b> yellow            | <b>37.</b> natural springs             |
| <b>17.</b> garden shed       | <b>38.</b> local product               |
| <b>18.</b> wildlife reserve  | <b>39.</b> characterised/characterized |
| <b>19.</b> firewood          | <b>40.</b> mature cheese(s)            |



# Listening Test 4

## SECTION 1

### Questions 1-7

Complete the form.

Write **NO MORE THAN TWO WORDS OR A NUMBER** for each answer.



صور الكود او  
اضغط على علامة الصوت

#### Client Details

Name: Andrew Peterson (Example)

Educational Qualification: Degree in **1**.....

Previous Job: **2**.....

Hobbies: **3**.....

Main Skills: **4**.....

Expected Salary (\$): **5**.....

Can start? **6**.....

Other languages? **7**.....

### Questions 8 - 10

Choose **THREE** letters from the list, A-G.

Which **THREE** qualities do employers most value in their staff?

- A.** Problem-solving skills
- B.** Diligence
- C.** Experience
- D.** Flexible hours
- E.** Independent thinking
- F.** Good personality
- G.** Qualifications

# Listening Test 4

## SECTION 2

### Questions 11-15

Answer the questions.

Write **ONE WORD ONLY** for each answer.

11. What does the centre provide first?
12. What is important to control?
13. What will be used to assess member's fitness level?
14. How often is the exercise schedule reviewed?
15. How many exercise programs are available?

### Questions 16-20

Write the correct letter, **A-G**, next to the questions.

Which place is best for

- 16..... developing confidence?
- 17..... reducing stress?
- 18..... building fitness?
- 19..... meeting others?
- 20..... finding information?

- |          |                  |
|----------|------------------|
| <b>A</b> | jogging machines |
| <b>B</b> | Yoga studio      |
| <b>C</b> | Weight units     |
| <b>D</b> | Front-desk area  |
| <b>E</b> | Squash courts    |
| <b>F</b> | Shower blocks    |
| <b>G</b> | Swimming pool    |

## Listening Test 4

### SECTION 3

#### Questions 21-25

Choose the correct letter, A, B, or C.

**21.** The position needs someone good at

- A** computers.
- B** dealing with people.
- C** arts.

**22.** The directors will select someone from the faculty of

- A** arts.
- B** computing.
- C** business.

**23.** The position will require the person to

- A** work long hours.
- B** train others.
- C** do weekend work.

**24.** The position will come with a

- A** car.
- B** parking space.
- C** much better salary.

**25.** The best aspect of the job is it

- A** gives more responsibility.
- B** comes with a private office.
- C** is a step to higher positions.

#### Questions 26-30

Complete the table.

Write **NO MORE THAN TWO WORDS OR A NUMBER** for each answer.

	Candidates			
	Steven	Abdul	Lek	Oscar
<b>Years of Experience</b>	26.....	7	8	12
<b>Qualification</b>	MBA	27.....	degree	certificates
<b>Possible Concerns</b>	28.....	limited English	29.....	30.....

# Listening Test 4

## SECTION 4

### Questions 31-33

Choose the correct letter, A, B, or C.

- 31.** Caves are  
**A.** often ignored.  
**B.** mostly in remote areas.  
**C.** often difficult to explore.
- 32.** People who explore caves  
**A.** mostly need to know about cartography  
**B.** enjoy overcoming the difficulties.  
**C.** usually know about cave sciences.
- 33.** China has  
**A.** probably the most undiscovered caves.  
**B.** a growing number of cave explorers.  
**C.** some of the best documented caves.

### Questions 34-40

Complete the table and notes.  
Write **NO MORE THAN TWO WORDS** for each answer.

Three Main Reasons for Cave Formation		
Dissolution	Volcanic Lava Tubes	Action of Waves
mainly involves <b>34</b> .....	<ul style="list-style-type: none"><li>• topmost surface cools down and <b>35</b>.....</li><li>• hotter lava continue to flow beneath</li></ul>	waves pound in to cliffs then erode into <b>36</b> ..... or less rigid rocks.
Limestone caves	<ul style="list-style-type: none"><li>• often have formations made of <b>37</b>..... carbonate</li><li>• e.g. stalactites, stalagmites, and <b>38</b>.....</li></ul>	
e.g. Lechuguilla	<ul style="list-style-type: none"><li>• finally revealed in <b>39</b>.....</li><li>• interestingly, formed from the <b>40</b>.....</li></ul>	

## Listening Test 4

- |                      |                     |
|----------------------|---------------------|
| 1. engineering       | 22. C               |
| 2. car salesman      | 23. A               |
| 3. (play)(ing) chess | 24. B               |
| 4. electronics       | 25. C               |
| 5. 1,200             | 26. 7               |
| 6. immediately       | 27. MBP             |
| 7. Spanish           | 28. not stable      |
| 8, 10. A,E,F         | 29. bad attitude    |
| 11. consultation(s)  | 30. health problems |
| 12. diet             | 31. C               |
| 13. test             | 32. C               |
| 14. monthly          | 33. A               |
| 15. three            | 34. limestone       |
| 16. C                | 35. solidifies      |
| 17. A                | 36. fault lines     |
| 18. E                | 37. calcium         |
| 19. F                | 38. flowstone       |
| 20. B                | 39. 1986            |
| 21. B                | 40. bottom up       |

# Listening Test 5

## SECTION 1

### Questions 1-5

Complete the notes below.

Write **NO MORE THAN TWO WORDS** for each answer



صور الكود أو  
اضغط على علامة الصوت

Transport form Highgate Village
Example Answer
Destination .....Camden Town.....
• Fast train leaves at <b>1</b> ..... from platform 9.
• Nearest station is <b>2</b> .....
• Number 999 bus goes to Gower Street <b>3</b> .....
• The train leaves the railway station from platform <b>4</b> .....
• There is a train every <b>5</b> .....

### Questions 6-10

Complete the table below.

Write **NO MORE THAN ONE WORD AND A NUMBER** for each answer.

Means of transport	Normal fare	Discounted fare
Bus	£2	£6.....
Train (busy time)	£7.....	
Train (off-peak hours)	£11	£8.....
Regular Thames boat trip	£6	£9.....
Half-day sightseeing boat tour	£45	-
Whole-day sightseeing boat tour	£10.....	-

# Listening Test 5

## SECTION 2

### Questions 11-16

Label the table below.

Write **NO MORE THAN TWO WORDS** for each answer.

Services offered	For individuals	For groups
email counselling	<ul style="list-style-type: none"><li>• your decision when to allocate time to your issues</li><li>• <b>11</b>..... and reflect</li></ul>	-
face-to-face individual counselling	<ul style="list-style-type: none"><li>• talk In person</li><li>• 50-minute session</li><li>• <b>12</b>..... time</li></ul>	-
group therapy	-	<ul style="list-style-type: none"><li>• how to function <b>13</b>..... to others</li><li>• <b>14</b>..... personal development</li></ul>
self-help resources	<ul style="list-style-type: none"><li>• find out more about your issues</li><li>• <b>15</b>..... 24/7</li><li>• links to a range of resources</li></ul>	-
specific issue workshops	-	<ul style="list-style-type: none"><li>• similar specific issues</li><li>• develop helpful <b>16</b>.....</li></ul>

### Questions 17-20

Which counsellor should you see?

Write the correct letter: **A, B or C**, next to questions **17-20**.

<b>A</b>	Deirdre Blythe
<b>B</b>	Bobby Foyle
<b>C</b>	Samantha Stewart

**17**..... if you have not made an appointment

**18** ..... if you have never seen a counsellor before

**19** ..... if you suffer from stress or anxiety

**20** ..... you are not able to see a counsellor during normal office hours

# Listening Test 5

## SECTION 3

### Questions 21-30

Complete the notes below.

Write **NO MORE THAN THREE WORDS** for each answer.

#### HOW TO WRITE AN ENGLISH LITERATURE ESSAY

##### Introductory Points

- Number one criterion for a good essay is **21**.....
- Avoid writing an essay that is a regurgitation of facts, **22**..... or other people's opinions.
- The second important thing to keep in mind is **23**.....
- Write **24**..... and ideas down before you start.
- Look at the **25**..... before you start writing.
- Know **26**..... . Do not make the mistake of writing for yourself.

##### Essay Structure

- Absolute maximum paragraph size is an **27**.....

##### Flow

- One thought should **28**..... another in your English Literature essay.
- To make the transition between paragraphs smoother, you can use **29**..... and phrases.

##### Argument

- Every English Literature essay should have a clear argument. This should not be **30**..... but rather, it should include several possible sides of the discussion.



# Listening Test 5

## SECTION 4

### Questions 31-35

Complete each sentence with **NO MORE THAN THREE WORDS**.

Red is a potent colour. It brings to mind many **31**.....

It is frequently used to imply or refer to **32** .....

Our faces become red when we are very angry, hence the expression to **33** .....

When **34** ....., we become suddenly red in the face from embarrassment or shame, modesty or guilt.

Finally, red is the colour most often used to symbolise love, the most common example of which is, of course, **35** .....

### Questions 36-40

Choose the correct letter, A, B, C or D.

**36.** According to colour psychology, wearing red clothing may influence

- A.** our visual perception.
- B.** our bank balance.
- C.** our bodily processes.
- D.** our interest in sport.

**37.** A surprising number of non-primate mammals

- A.** have a new cell in their retina.
- B.** are dogs.
- C.** are colour-blind.
- D.** cannot survive in the tropics.

**38.** Russell Hill and Robert Barton's experiments showed that humans react to red

- A.** with humility and arrogance.
- B.** in the same way as mandrill monkeys.
- C.** only 5% of the time.
- D.** as if they are footballers trying to score a penalty.

**39.** Which is NOT mentioned as a reason for the effect of wearing red in sport?

- A.** Wearing red helps the athlete rise to a higher level of self-confidence.
- B.** Wearing red makes people domineering and controlling.
- C.** The opponent of an athlete wearing red feels threatened.
- D.** Umpires tend to be partial towards athletes wearing red.

**40.** Colour psychology is

- A** studied by very young scientists.
- B** an old-fashioned branch of science.
- C** considered to use controversial experimental methods.
- D** interested in how colour can be used to improve work performance.

## Listening Test 5

### ANSWERS

- |                                      |                                  |
|--------------------------------------|----------------------------------|
| <b>1.</b> 8.30                       | <b>21.</b> readability           |
| <b>2.</b> King's Cross               | <b>22.</b> lecture notes         |
| <b>3.</b> Underground Station        | <b>23.</b> planning              |
| <b>4.</b> 6                          | <b>24.</b> key points            |
| <b>5.</b> 5 minutes                  | <b>25.</b> whole picture         |
| <b>6.</b> 1.40                       | <b>26.</b> your reader           |
| <b>7.</b> 11                         | <b>27.</b> A4 page               |
| <b>8.</b> 6.05                       | <b>28.</b> seem to follow        |
| <b>9.</b> 4.80                       | <b>29.</b> connective words      |
| <b>10.</b> 75                        | <b>30.</b> one-sided             |
| <b>11.</b> write down                | <b>31.</b> powerful associations |
| <b>12.</b> pre-scheduled appointment | <b>32.</b> danger and warning    |
| <b>13.</b> in relation               | <b>33.</b> see red               |
| <b>14.</b> long-term                 | <b>34.</b> we blush              |
| <b>15.</b> accessible                | <b>35.</b> the red rose          |
| <b>16.</b> strategies                | <b>36.</b> C                     |
| <b>17.</b> B                         | <b>37.</b> C                     |
| <b>18.</b> A                         | <b>38.</b> B                     |
| <b>19.</b> C                         | <b>39.</b> B                     |
| <b>20.</b> A                         | <b>40.</b> D                     |

